



Pulse Satellite Data Logger

Remote Satellite Telemetry Data Logging

Product Information



Your data, anywhere.

Designed and made in Australia

Overview

Recently developed to meet the market demand, the Pulsar Satellite Data Logger is a versatile pulse data logger that can be used for tipping rain gauges and water meters. This device utilises the Iridium Satellite providing telemetry that can be accessed anywhere.

Feature Description

Using this data logger, you will be able to monitor and manage your water meter or tipping rain gauge remotely once the installation has been completed. With simplicity in mind there is only one toggle switch.

- Satellite connectivity.
- Sensor data stored in flash memory on board as a backup.
- The default configuration has a 10 minute sample interval and daily reporting frequencies.
- User customisable with site set up tools via Android and MAC IOS app.
- Solar powered.

Certification

The Pulse Satellite Data Logger has been designed to comply with the Australian Standards:

- AS/NZS 3820:2009 for low voltage battery powered devices.
- Iridium Certification.

Site Expectations

- The data logger is a scientific instrument that needs to be installed correctly. If the logger is not installed correctly the accuracy of its data cannot be relied upon.
- The site needs to have a clear view of the sky for best possible satellite connectivity.
- Solar cell must be facing the sun (north for Southern Hemisphere).



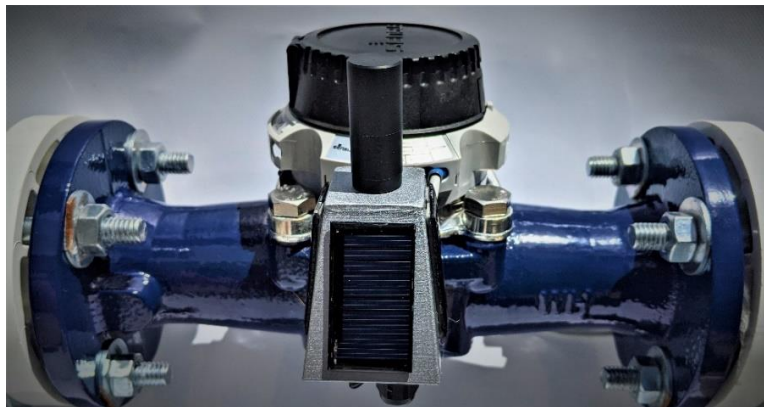
Device Specifications

Product Features

- Solar powered lithium-ion supercapacitors.
- Satellite connectivity via Iridium network
- Sampling frequencies supported to as low as ten minutes
- Remotely configurable by the end user via the iOS/Android application and Web Portal
- OTA firmware updates via the phone application

Technical Specifications

- 3.6 μ W typical power consumption when sleeping
- Supports pulse input frequencies up to 100 Hz.
- Operational temperature range: -20 to 80°C
- Dimensions: H: 105mm; W: 50mm; D: 60mm
- Product weight: 140 grams



A Pulse Satellite Data Logger installed on a Bermad Water Meter

Ontoto Dashboard

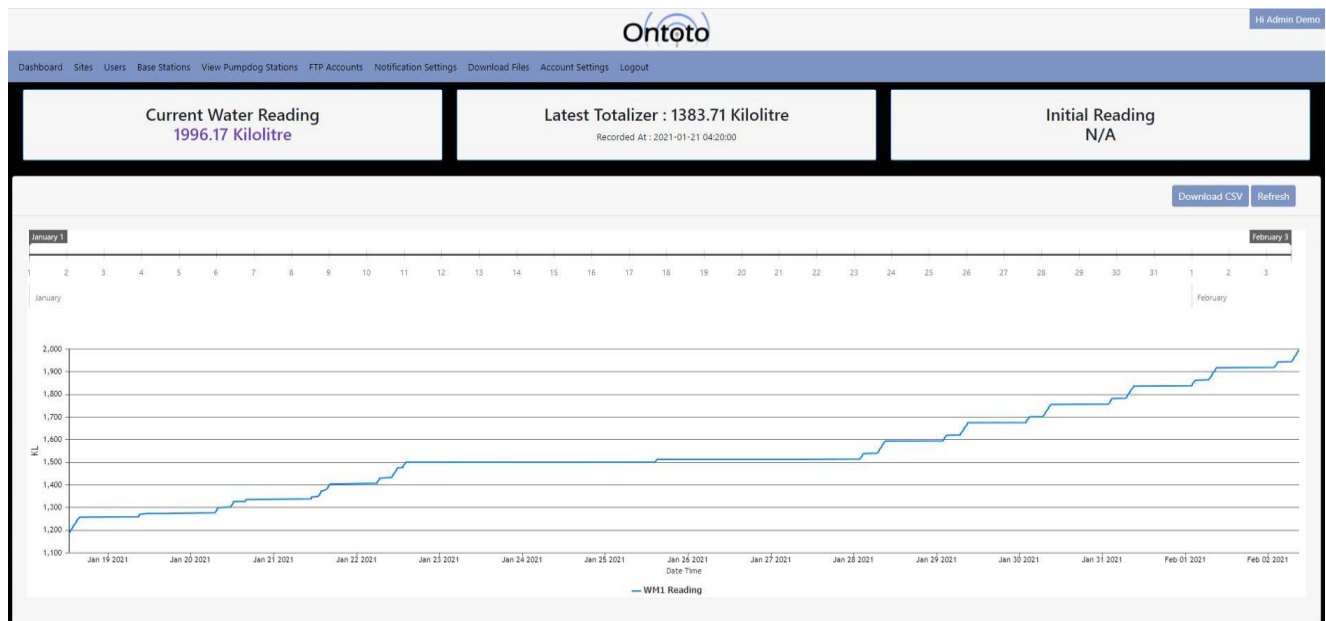
Once your data logger is installed, you can monitor your meter or rain gauge using the Ontoto Web Portal. Reporting is provided on the following:

- Cumulative water usage
- Daily water usage
- Water usage recorded every 10 minutes

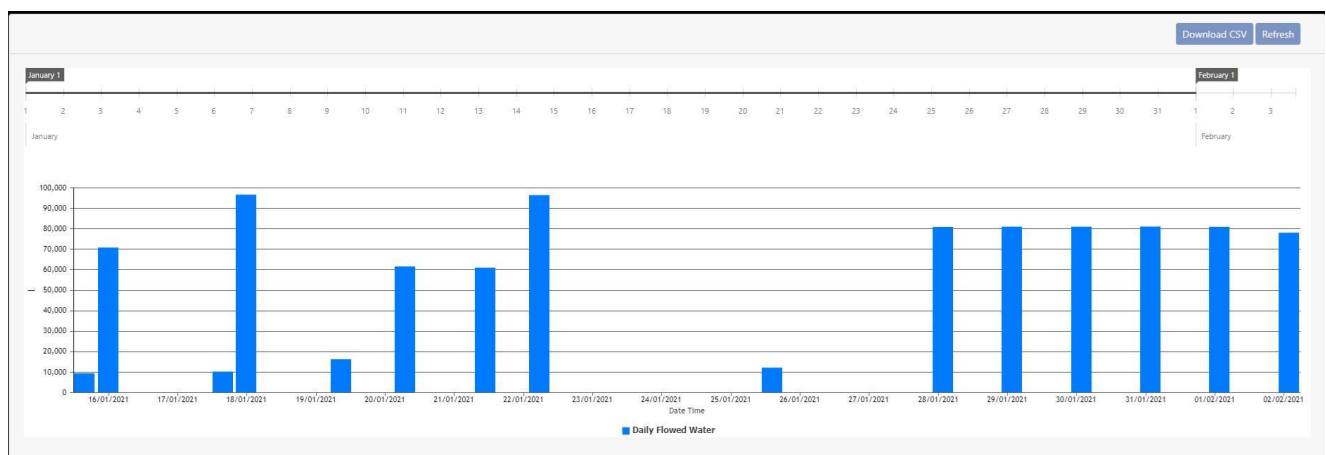
Following are examples of the data the web portal produces.



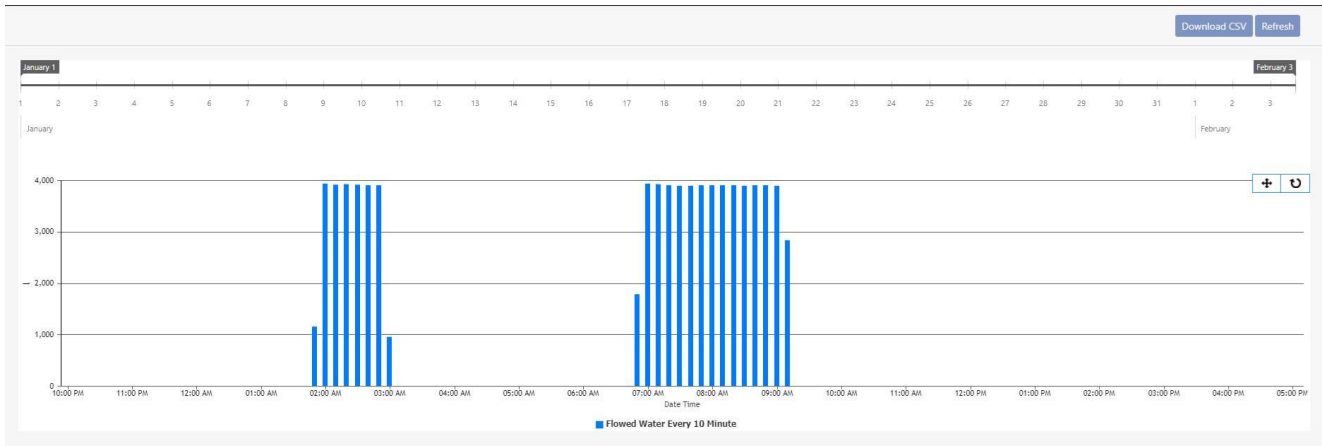
Graph 1: Cumulative water data



Graph 2: Daily Water Data



Graph 3: Water data recorded every 10 minutes



Warranty

Ontoto Pty Ltd will warrant the entire product (excluding the batteries) for 5 years from the date of delivery for parts and labour.





193 Lackey Road
Moss Vale NSW 2577

www.ontoto.com

Ph: (02) 4869 3732

